



SAN LUIS SUSTAINABILITY GROUP

COMMUNITY AND RESIDENTIAL

Our residential scale work has been with a wide variety of housing types and densities. We have dealt with very strong community context, such as with this cohousing project, as well as single family houses in a variety of settings as shown on the adjacent page.

Tierra Nueva Cohousing Community: Oceano, California



27 Units on 5 acres
plus
common house
plus
community orchard &
gardens
plus
playground, crafts building
and
all units are passively
heated and cooled

"Once again we send you
our appreciation for your
design of the container
that holds such great
adventures for us here in
Tierra Nueva Cohousing."
-Kay & Floyd Tift,
Tierra Nueva residents

G = Garages

SOUTH
↓

Image: Google Earth



Image: Emily Hagopian

The overall site layout and the flexible building design encourages individual customization of interiors and exteriors as much as possible.

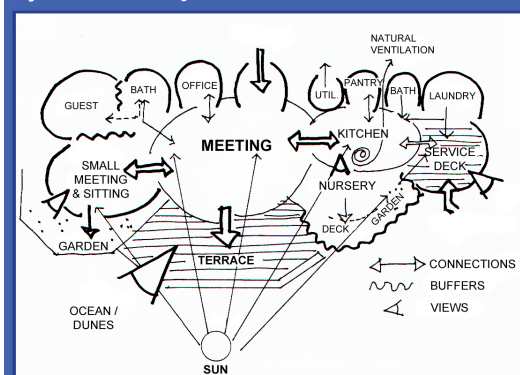


Image: Emily Hagopian

Interior of a typical unit

In cohousing, the neighborhood is formed first and physical planning and design follows. If successful, as in this case, many social and economic advantages are achieved because, to quote Cohousing Developer Jim Leach:

"Community is the hidden dimension of sustainability."



Common house functional relationships



Common house exterior



Image: Emily Hagopian

Common house interior

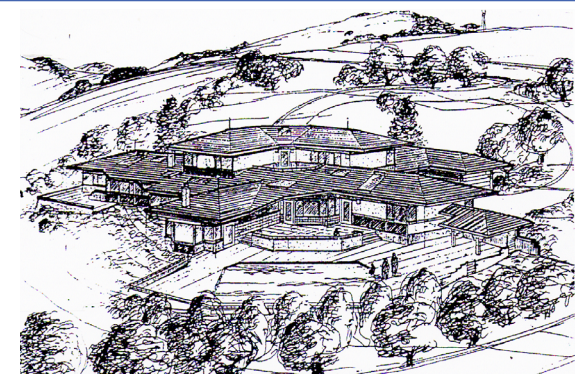
OTHER RESIDENTIAL PROJECTS

In addition to multi family and high density, we have designed over 200 single family residences for a variety of settings. The common elements in all of these projects are passive solar design for heating and cooling as well as daylighting, strong connection of interiors and exteriors, and honest expression of materials and form.



Image: Joseph Kasperovich

Single Family Residence, Avila Beach, California



Single Family Residence, Arroyo Grande, California



'Tower House'
Oceano, CA

A 3-story residence on a very tight urban lot in Oceano, CA



Farm House, Templeton, California

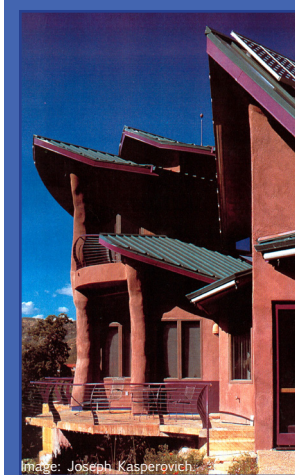


Image: Joseph Kasperovich



Image: Emily Hagopian

Trout Farm Residence, Santa Margarita, California



Anchor Ranch House, Lone Pine, California

This was the first permitted straw bale building in California